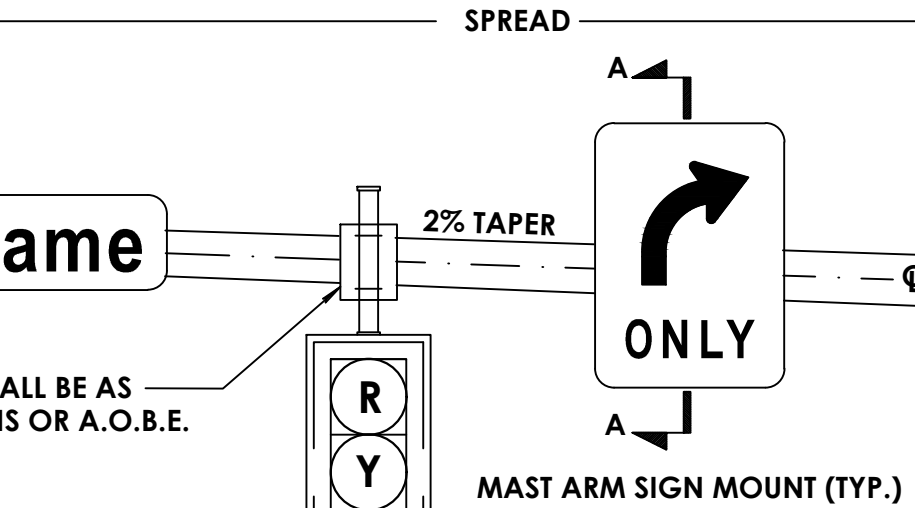
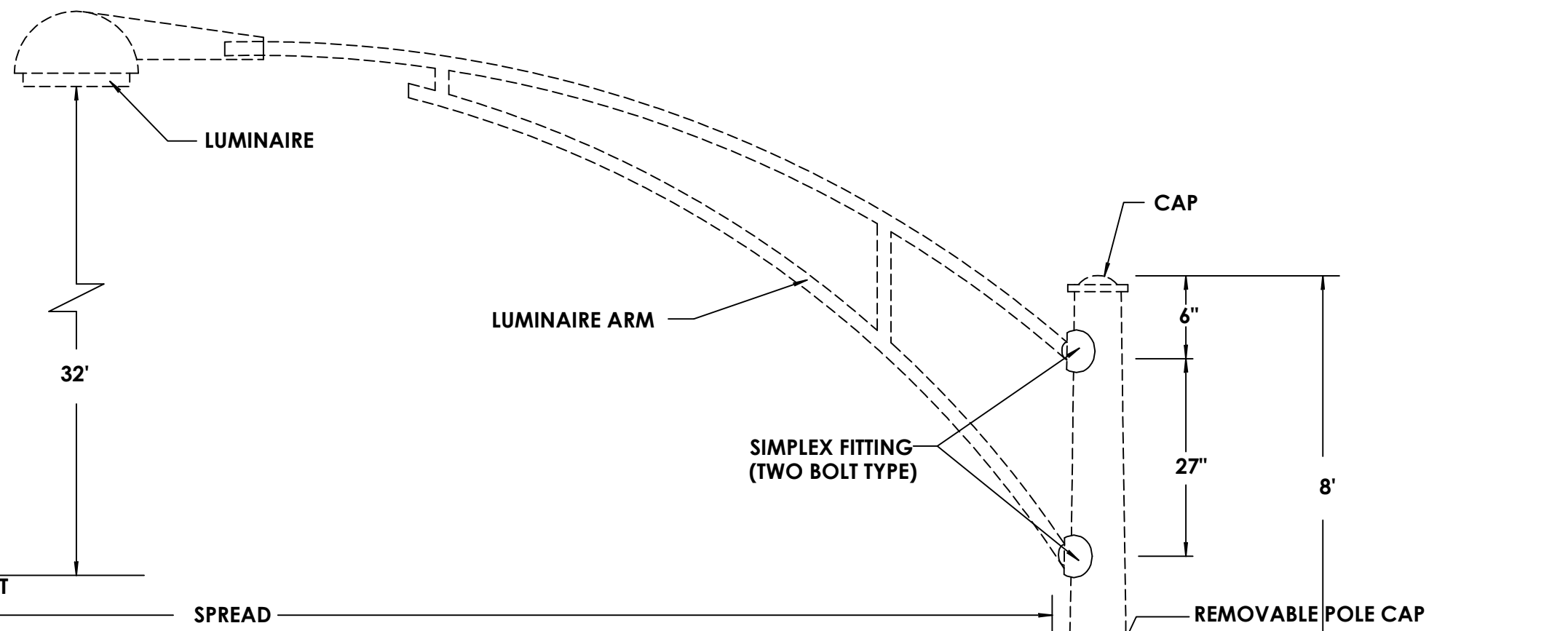


RIGID SIGNAL HEAD MOUNTING
MCDOT DETAIL

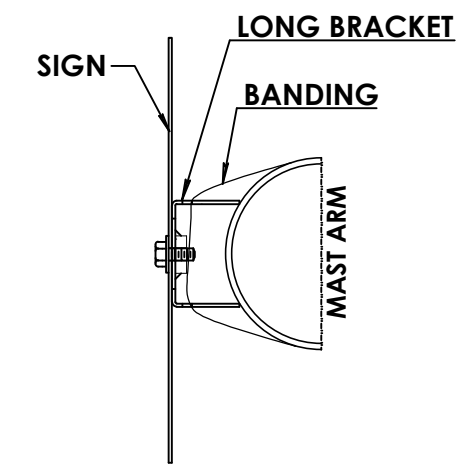
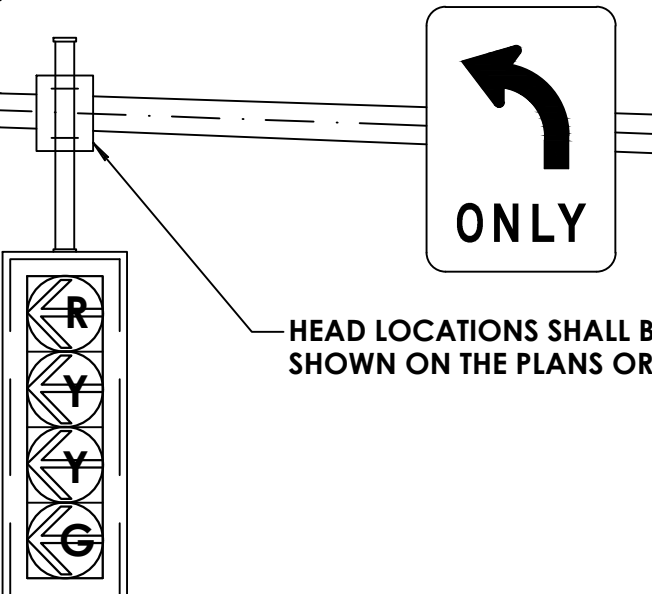
- NOTES:**
1. TOP OF SIGNAL HEAD ATTACHMENT POINT TO BE SEALED WITH U.V. RESISTANT SILICONE TO PREVENT WEATHER INTRUSION.
 2. HOLE IN MAST ARM TO HAVE RUBBER BUSHING TO PREVENT CABLE CHAFFING.
 3. DRIP LOOP REQUIRED IN CABLE BETWEEN MAST ARM AND SIGNAL HEAD.
 4. CABLE CLAMP AND ASSOCIATED HARDWARE TO BE TORQUED PER MANUFACTURER SPECIFICATIONS.
 5. CORD CONNECTOR OR STRAIN RELIEF REQUIRED WHERE CABLE ENTERS THE SIGNAL HEAD



- NOTES:**
1. SIGNAL HOUSING SHALL BE POLYCARBONATE (COLOR: YELLOW).
 2. TOP OF SIGNAL HEADS SHALL BE LEVEL ACROSS APPROACH
 3. SIGNAL BULBS SHALL BE GE WITH TINTED LENSES (CLEAR LENSES WILL NOT BE ACCEPTED)

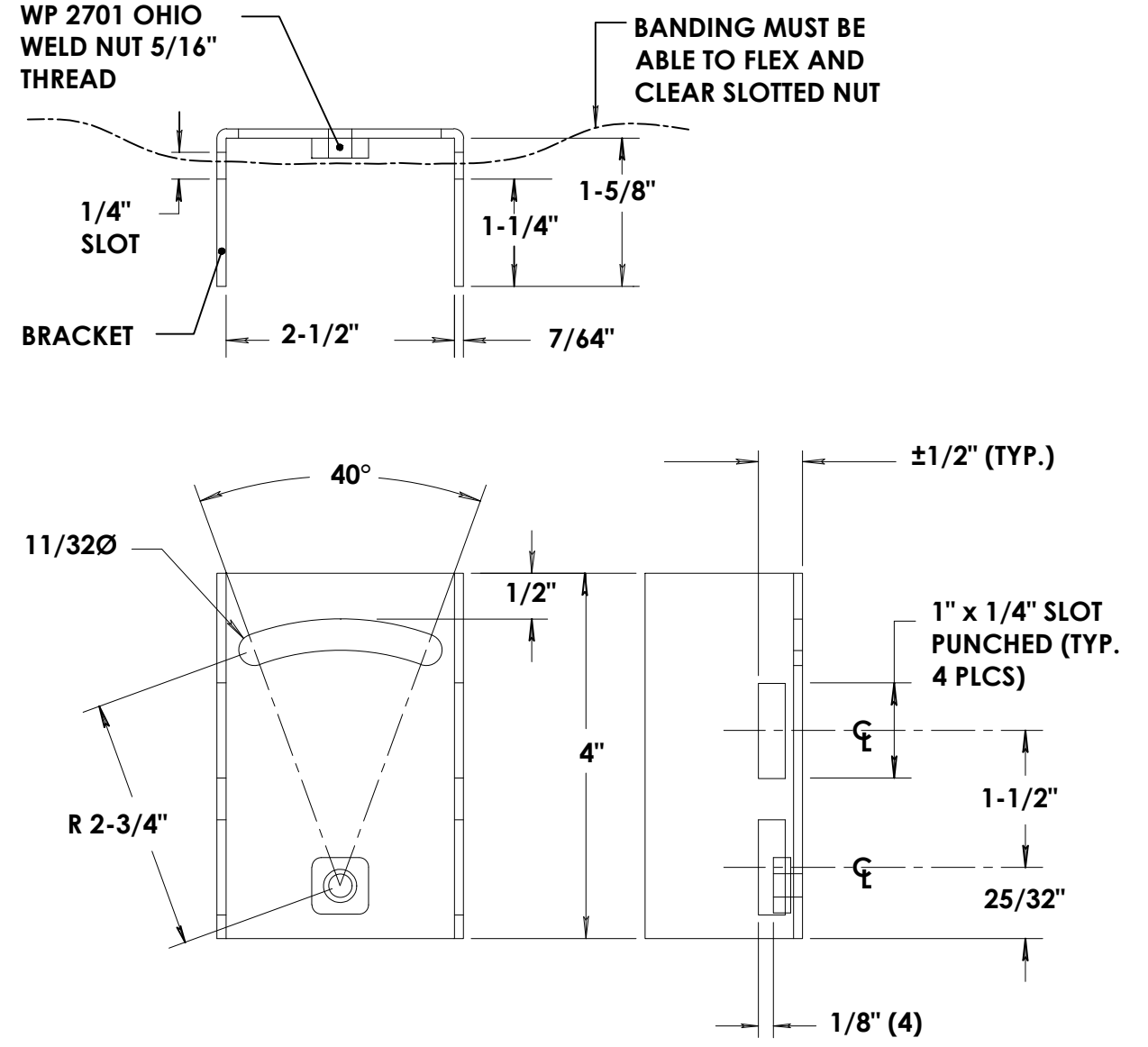
HEAD LOCATIONS SHALL BE AS SHOWN ON THE PLANS OR A.O.B.E.

Street Name



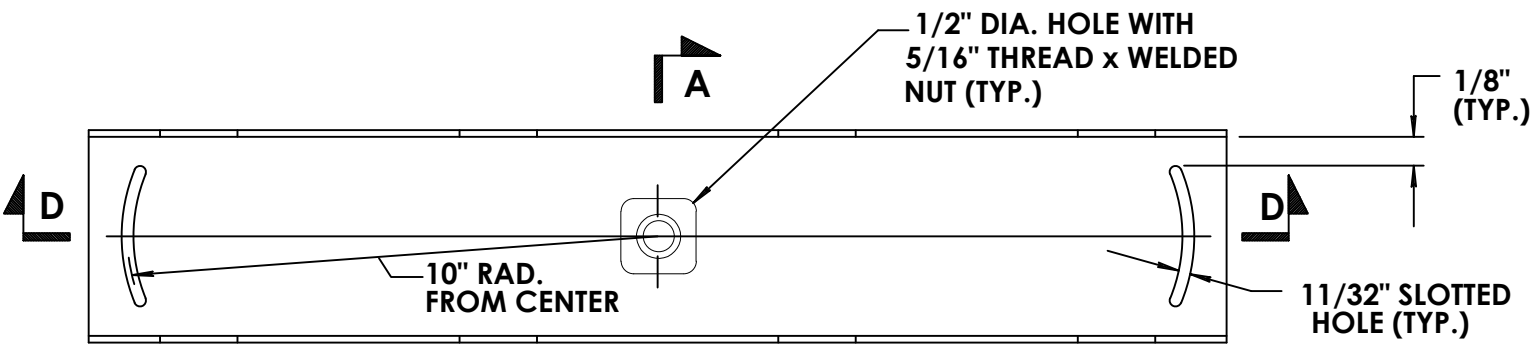
SIGNAL POLE NOTES

1. POLES SHALL BE ADJUSTED BY USE OF THE LEVELING NUTS ON THE ANCHOR BOLTS SO THAT THEY ARE VERTICAL WHEN ALL SIGNAL HEADS AND SIGNS ARE INSTALLED.
2. ANCHOR BOLTS SHALL HAVE THREE THREAD SHOWING ABOVE THE TOP NUT.
3. POLES SHALL BE LOCATED NO CLOSER TO THE ROADWAY OR CURB THAN THE LINE OF FIXED OBJECTS IN THE IMMEDIATE AREA AND IN NO CASE LESS THAN 2' FROM THE ROADWAY OR CURB.
4. BEARING SURFACE OF HOLE SHALL BE UNDISTURBED GROUND OR COMPACTED SOIL. IF A FORM IS REQUIRED OR PRECAST BASE IS USED, IT SHALL BE AS A.O.B.E.. POLE FOUNDATION MAY BE REQUIRED TO BE NARROWED AND DEEPENED TO AVOID EXISTING UTILITIES IN SPECIFIC LOCATIONS. ALLOWANCE FOR ANY ADJUSTMENT NECESSARY TO BE INCLUDED IN PRICE BID FOR POLE FOUNDATION.
5. LANE DESIGNATION SIGNS SHALL BE CENTERED ON THE TRAVEL LANES.
6. IF PRESENT, 4-SECTION HEADS WITH FLASHING YELLOW ARROWS SHALL BE LOCATED TO THE LEFT OF THE " LEFT TURN ONLY " SIGN.
7. ANY MAST ARMS LONGER THAN 40' WILL REQUIRE A VIBRATION MITIGATION DEVICE TO BE INSTALLED (COST TO BE INCLUDED IN PRICE BID FOR THE MAST ARM).



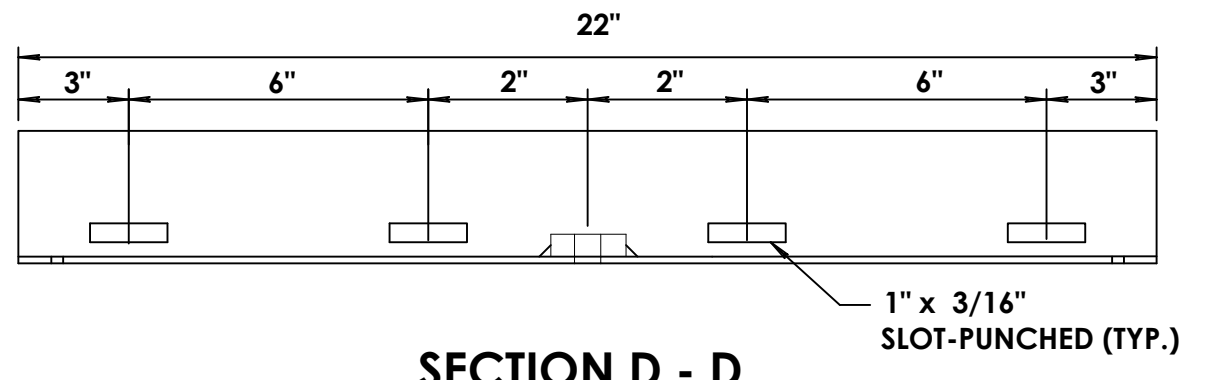
MAST ARM SIGN BRACKET - SHORT
MCDOT DETAIL

- NOTES:**
1. BRACKET TO BE Banded TO THE MAST ARM WITH STAINLESS STEEL BANDING MATERIAL. (3/4" WIDE x .020 GAUGE)
 2. BRACKETS SHALL BE 12 GAUGE GALVANIZED STEEL
 3. SHORT BRACKET FOR STREET NAME SIGNS (USE 2 BRACKETS FOR SIGNS UP TO 4' LONG. USE 3 BRACKETS(min) FOR 4' OR LONGER. USE SLOTS FOR BRACKETS AN ENDS TO ENSURE SIGN IS LEVEL.)



MAST ARM SIGN BRACKET-LONG
MCDOT DETAIL

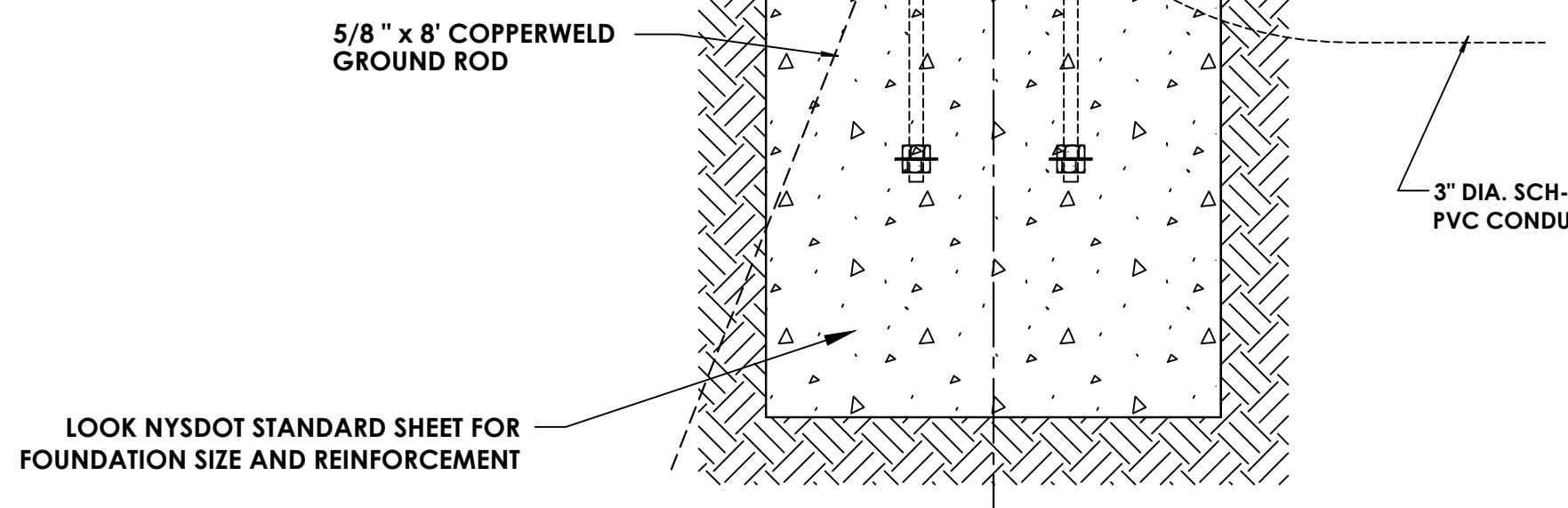
- NOTES:**
1. BRACKET TO BE Banded TO THE MAST ARM WITH STAINLESS STEEL BANDING MATERIAL. (3/4" WIDE x 0.015" THICK)
 2. BRACKET SHALL BE 12 GAUGE GALVANIZED STEEL
 3. LONG BRACKET FOR LARGE SIGN (USE 4 BANDS PER BRACKET)



SECTION D - D

2"(Min) TO 6"(Max) GAP BETWEEN CONCRETE AND BOTTOM OF POLE TO BE SEALED WITH 1/2" STAINLESS STEEL MESH.

NOTE: IN SIDEWALK AREAS, TOP OF CONCRETE FOUNDATION SHALL BE LEFT LOW SO THAT CONTINUOUS CONCRETE SIDEWALK CAN BE POURED OVER TOP. IN GRASS AREAS, THE TOP OF CONCRETE FOUNDATION SHALL BE 1.5' ABOVE GRADE



LOOK NYSDOT STANDARD SHEET FOR FOUNDATION SIZE AND REINFORCEMENT

SIGNAL POLE INSTALLATION MAST ARM
MCDOT DETAIL - REV. 07/15/2024

NO.	DATE	BY	REVISION

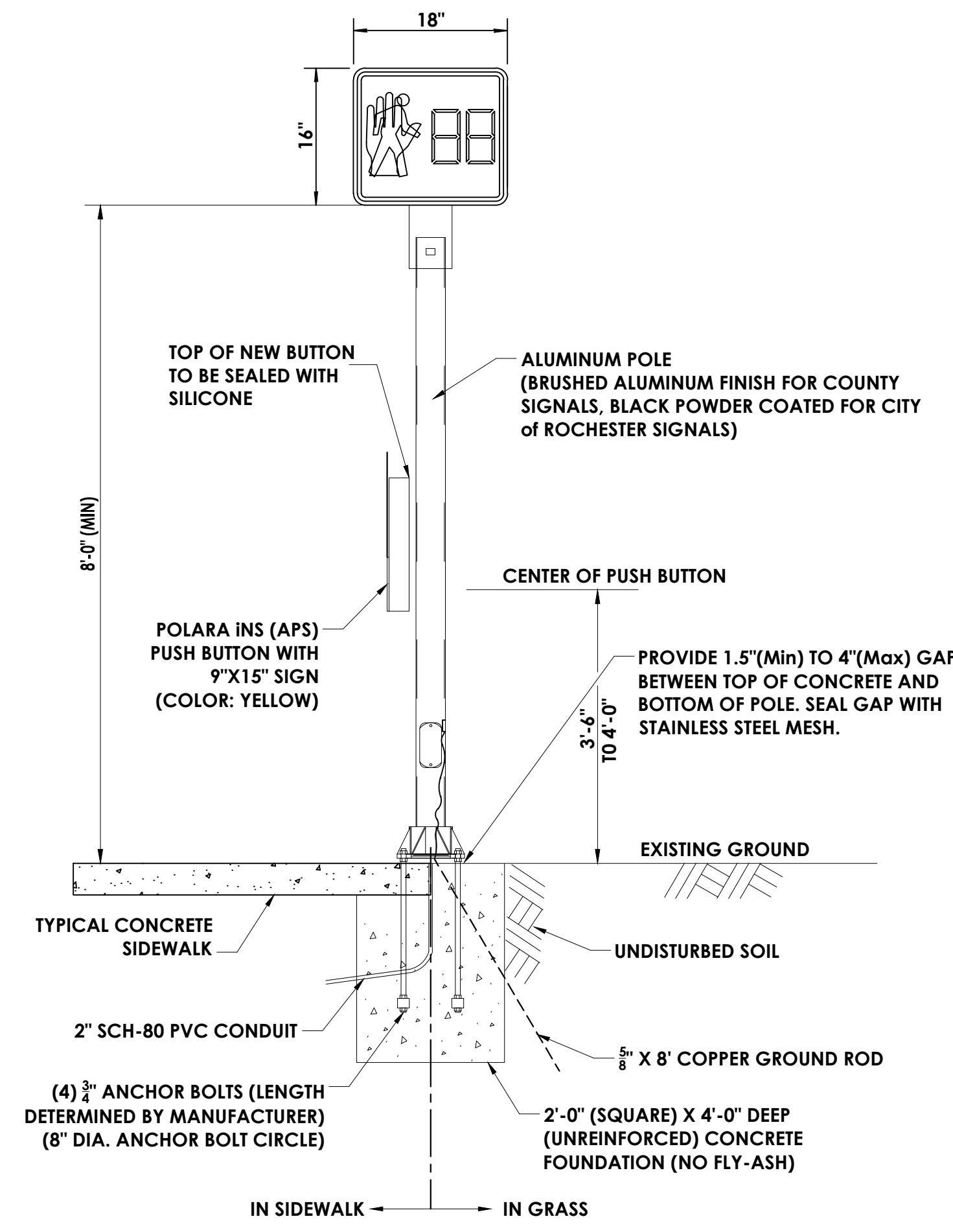
CONSULTANT
 (585) 867-5309
 Fax: (585) 867-5309
 Consultant Address:
 Rochester, New York XXXX
 PROJECT MANAGER: MANAGER
 DRAWN BY: DRAFTER

DEPARTMENT OF TRANSPORTATION
 50 WEST MAIN STREET, SUITE 6100
 ROCHESTER, NEW YORK 14614-1231
 UNAUTHORIZED ALTERATION OR ADDITION TO THIS DRAWING IS A VIOLATION OF THE NEW YORK STATE EDUCATION LAW ARTICLE 145, SECTION 7209

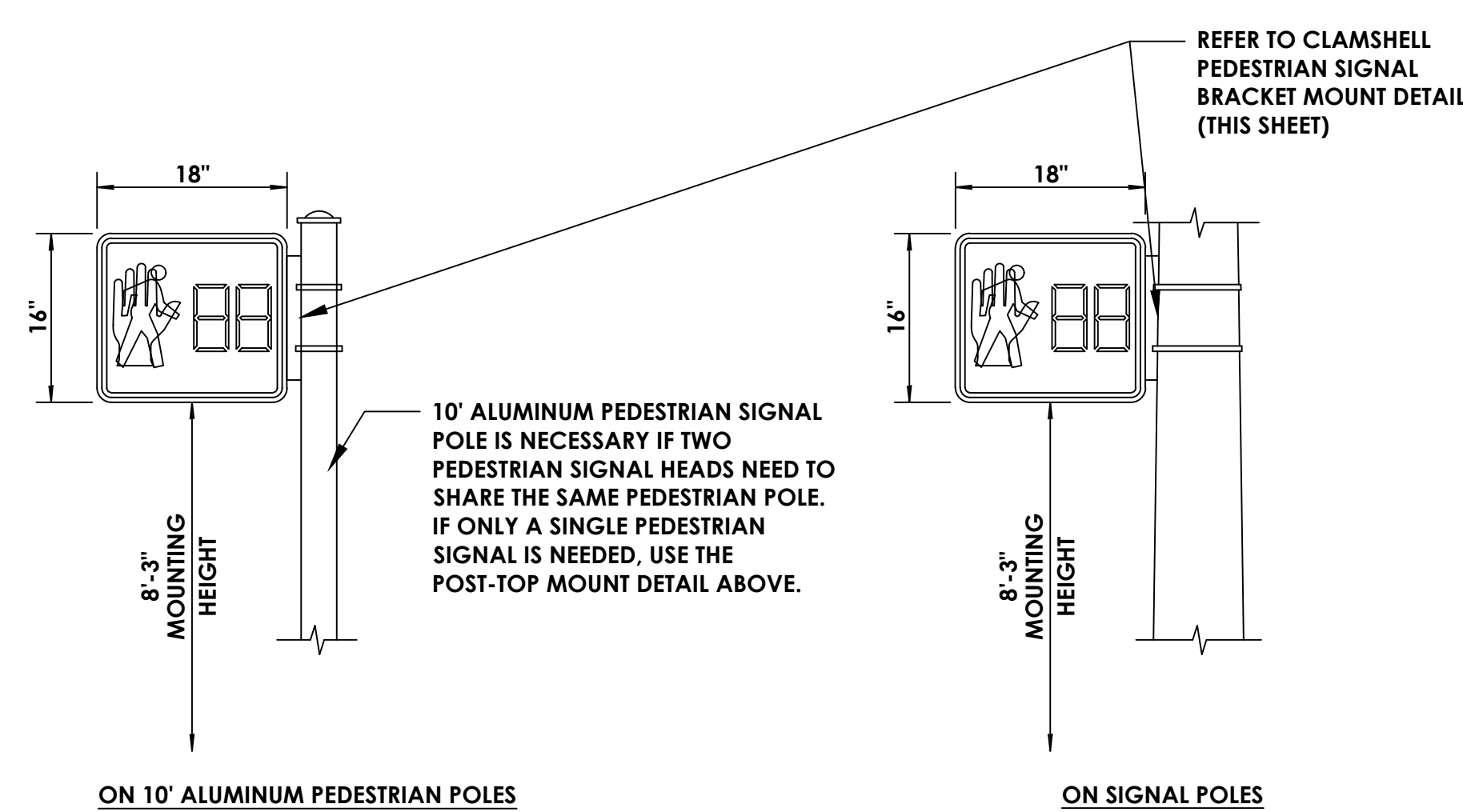
COUNTY ROAD #	
PROJECT NAME	
PROJECT LIMITS	
TOWN	
CAPITAL PROJECT NO.	XXXX-XX

TRAFFIC SIGNALS

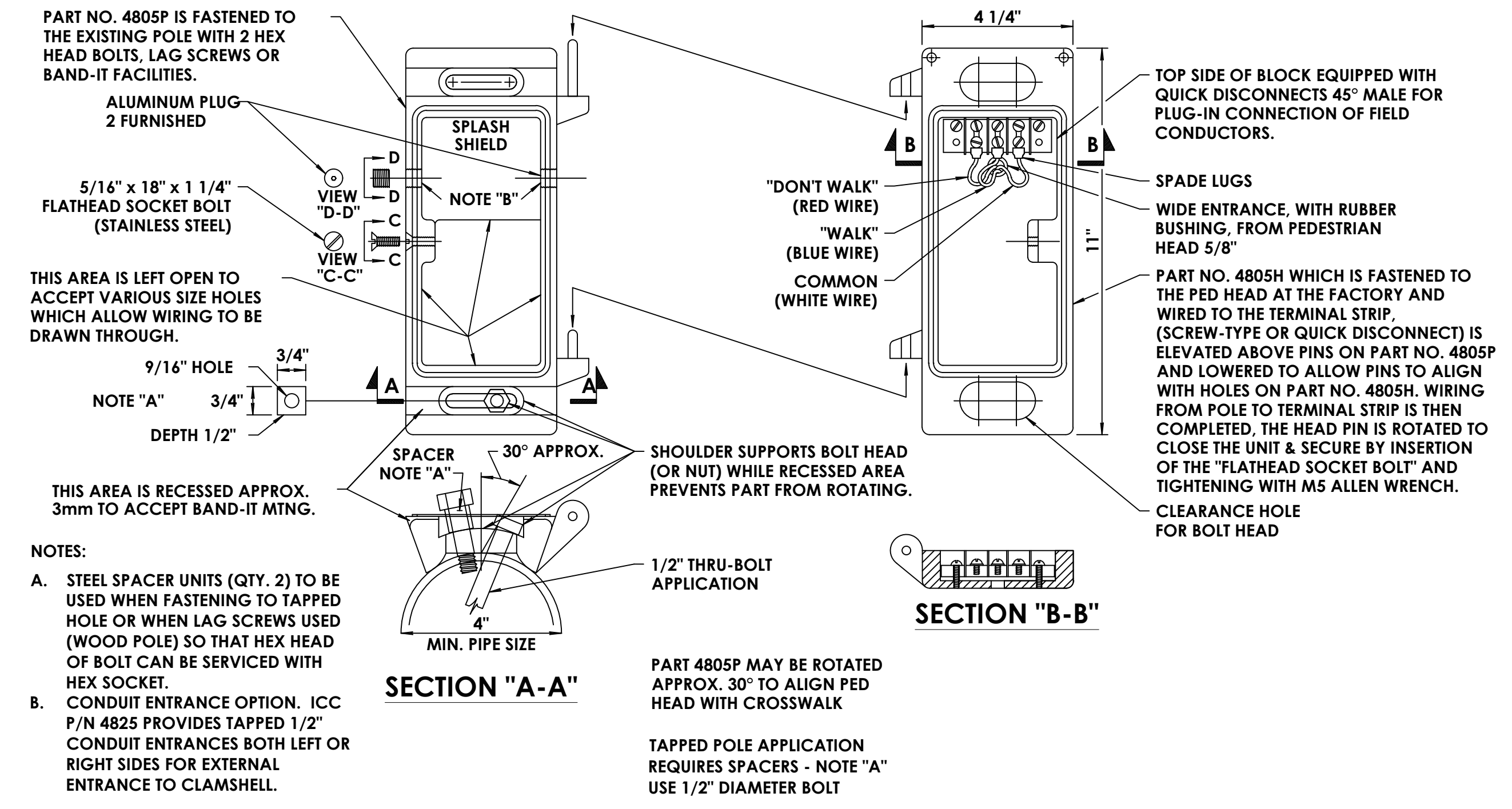
SCALE: NOT TO SCALE
 DATE ISSUED: DATE
 DRAWING NO.
 1 OF 4



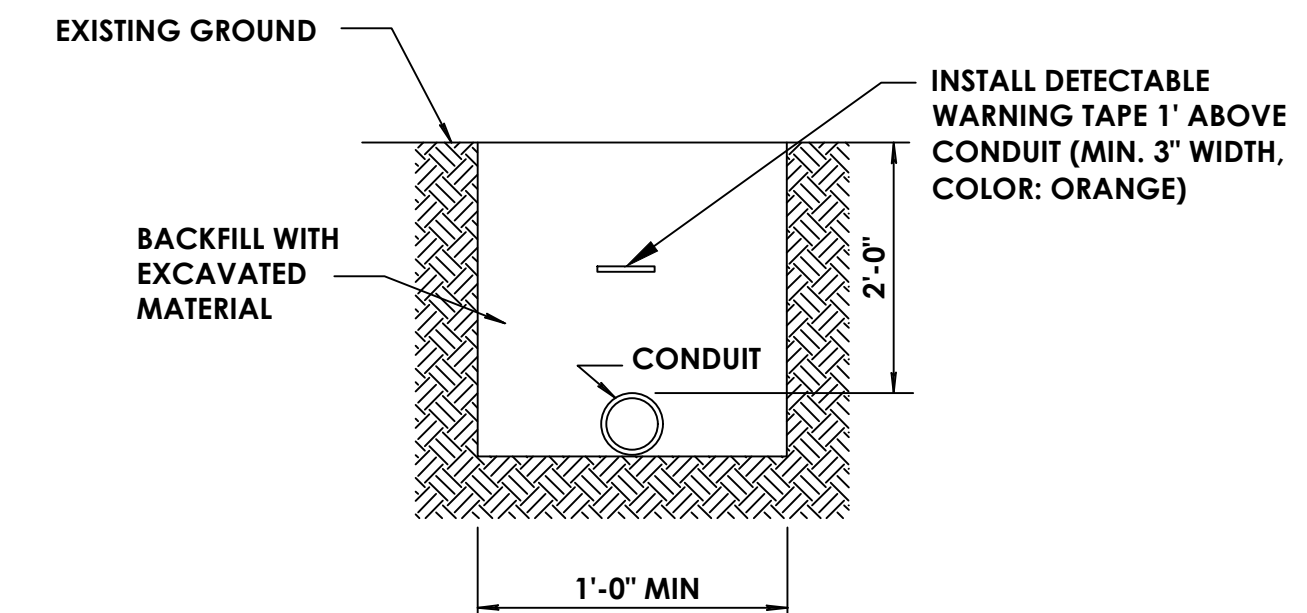
ALUMINUM PEDESTRIAN POLE - 8' POST-TOP MOUNT
MCDOT DETAILS - REV. 7/15/2024



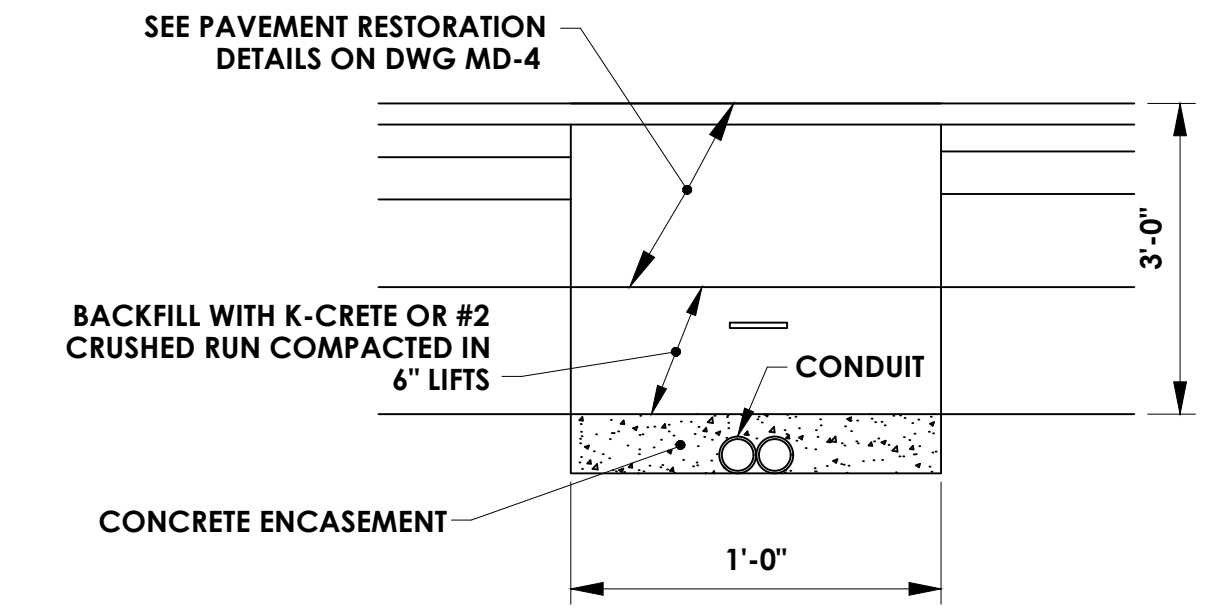
CLAMSHELL PEDESTRIAN SIGNAL INSTALLATIONS
MCDOT DETAIL - REV. 6/10/2024



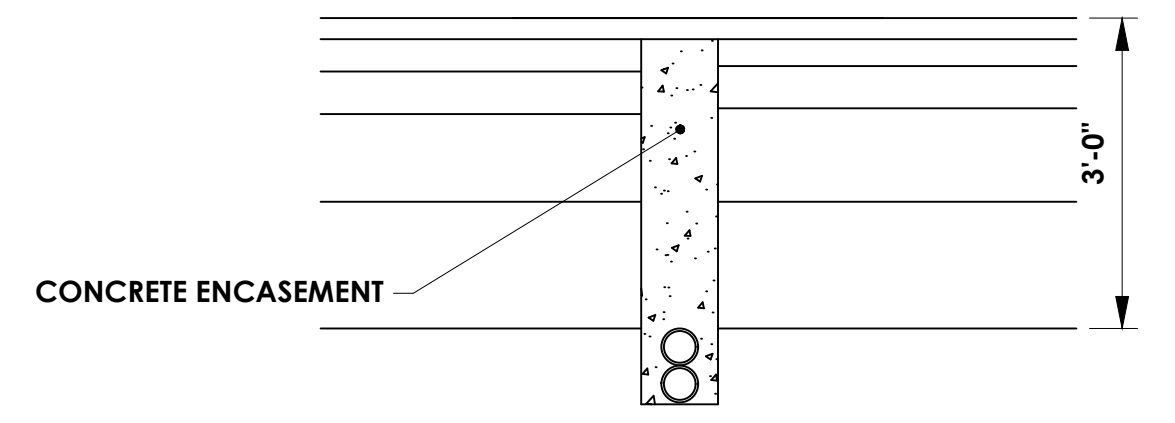
CLAMSHELL PEDESTRIAN SIGNAL BRACKET MOUNT
MCDOT DETAIL - REV. 3/4/2015



CONDUIT TRENCH IN GRASS
MCDOT DETAIL - REV 2/20/2024



CONDUIT TRENCH IN PAVEMENT
MCDOT DETAIL - REV 7/15/2024



CONDUIT TRENCH IN PAVEMENT (VERMEER CUT)
MCDOT DETAIL - REV. 7/15/2024

- NOTES:**
- ALL CONDUITS SHALL HAVE A LOW STRETCH POLYESTER PULL TAPE INSTALLED FOR FUTURE NEEDS.
 - EMPTY CONDUITS SHALL HAVE A TRACER WIRE AND A JET-LINE INSTALLED.

- NOTES:**
- TYPICAL DEPTH OF CONDUIT UNDER ROAD SHALL BE 3'-0" AS SHOWN. IF UTILITY CONFLICTS EXIST, A MINIMUM DEPTH OF 24" SHALL BE UTILIZED.
 - CONDUIT(S) UNDER THE PAVEMENT SHALL BE ENCASED IN CONCRETE TO A MINIMUM DEPTH OF 6" ABOVE THE TOP OF THE CONDUIT.
 - ALL CONDUITS SHALL HAVE A LOW STRETCH POLYESTER PULL TAPE INSTALLED FOR FUTURE NEEDS.
 - EMPTY CONDUITS SHALL HAVE A TRACER WIRE AND A JET-LINE INSTALLED.

NO.	DATE	BY	REVISION

CONSULTANT
 Consultant Address: (585) 867-5309
 Rochester, New York XXXX
 Fax: (585) 867-5309

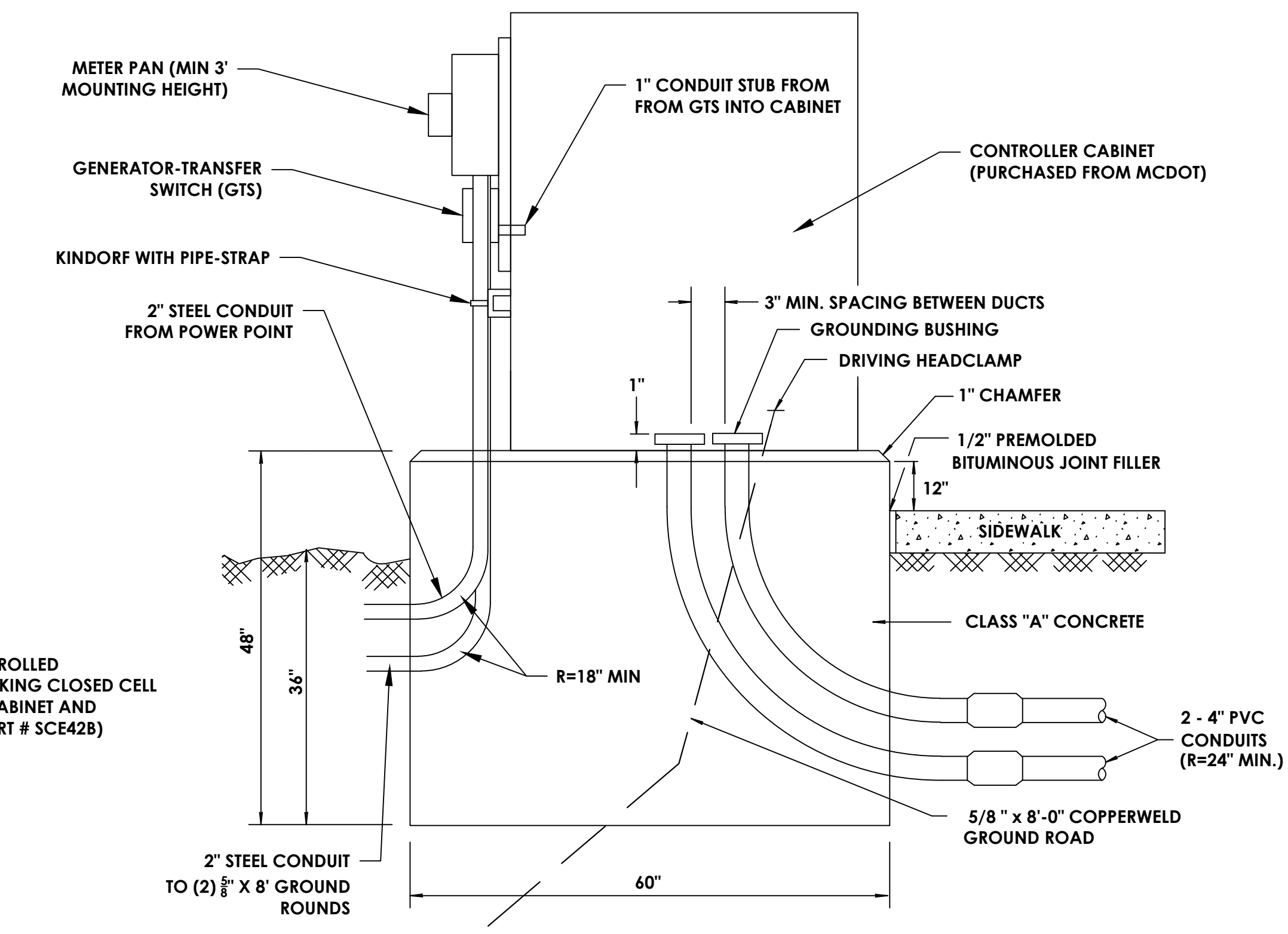
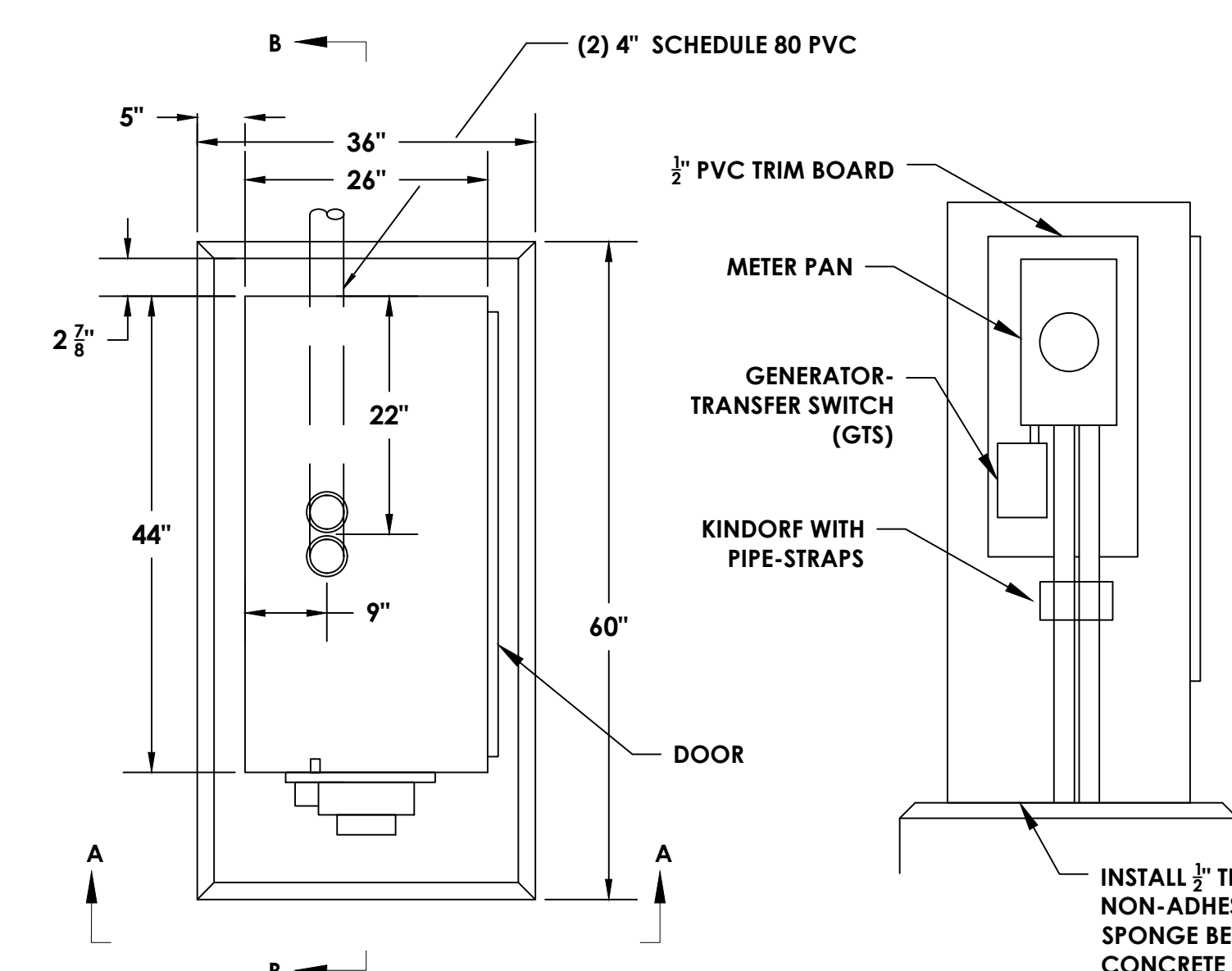
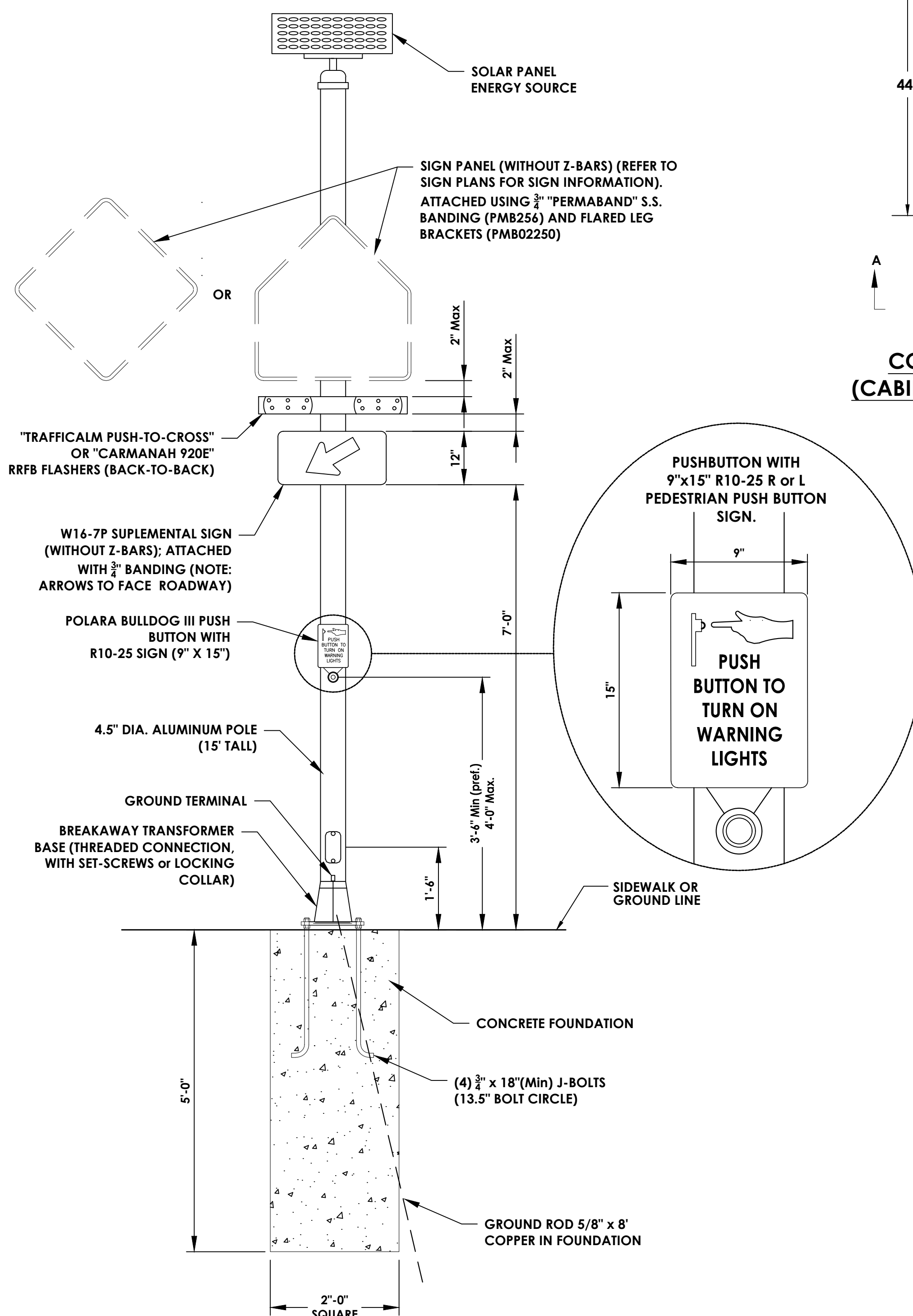
PROJECT MANAGER: MANAGER
 DRAWN BY: DRAFTER

DEPARTMENT OF TRANSPORTATION
 50 WEST MAIN STREET, SUITE 6100
 ROCHESTER, NEW YORK 14614-1231
 UNAUTHORIZED ALTERATION OR ADDITION TO THIS DRAWING IS A VIOLATION OF THE NEW YORK STATE EDUCATION LAW, ARTICLE 145, SECTION 7209

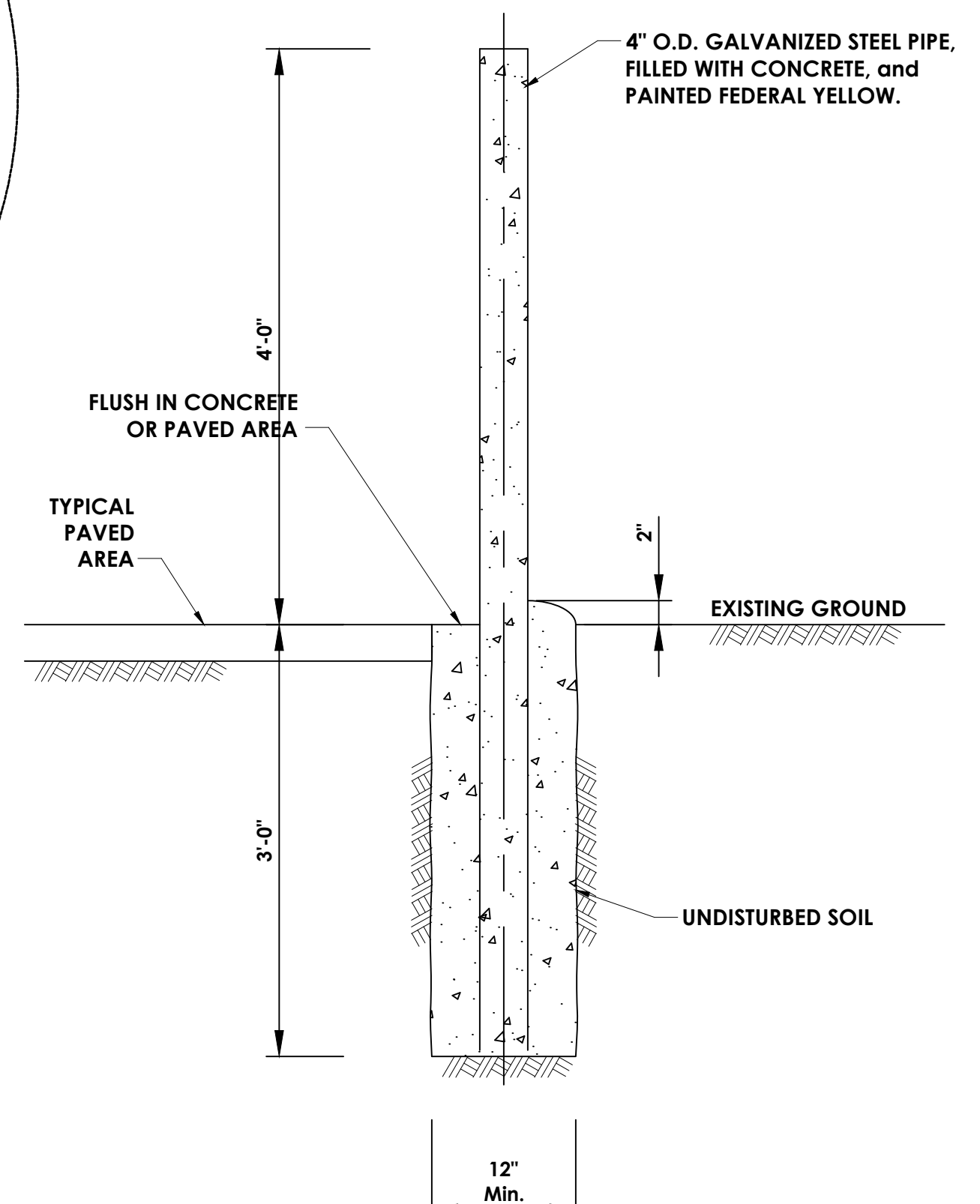
COUNTY ROAD	#
PROJECT NAME	LIMITS
PROJECT LIMITS	TOWN
CAPITAL PROJECT NO.	XXXX-XX

TRAFFIC SIGNALS

SCALE: NOT TO SCALE
 DATE ISSUED: DATE
 DRAWING NO.
 2 OF 4



- NOTES:**
- IN UNPAVED AREAS A MIN. 5' X 5' X 4" CONCRETE WORK PAD SHALL BE PLACED IN FRONT OF THE CABINET DOOR. (COST TO BE INCLUDED IN ITEM 680.5002)
 - CONCRETE EXPANSION JOINT MATERIAL (1/2" X 4" (MIN)) SHALL BE PLACED BETWEEN THE WORK PAD AND THE CABINET BASE.
 - TWO GROUND RODS TO BE INSTALLED 6' FROM METER AND 10' FROM APART (FACING DOOR OF CABINET).



- NOTES:**
- BOLLARDS SHALL BE A MIN 12" AWAY FROM TRAFFIC SIGNAL CABINET.
 - CONSULT MCDOT FOR FINAL FIELD PLACEMENT

MCDOT STANDARD FOR INTERSECTION and COMMUNICATION WIRING

MCDOT DISCONNECT WIRING GUIDE FOR SPAN WIRE INTERSECTIONS		
Terminal Number	Conductor Color	Indication Type
1	BLACK	Left Turn Green
2	BLUE	Left Turn Yellow
3	GREEN	Green Ball
4	ORANGE	Yellow Ball
5	RED	Red Ball
6	BLACK/WHITE	Left Turn Green
7	BLUE/BLACK	Left Turn Yellow
8	GREEN/BLACK	Green Ball
9	ORANGE/BLACK	Yellow Ball
10	RED/BLACK	Red Ball
11	BLACK/RED	Left Turn Green
12	BLUE/WHITE	Left Turn Yellow
13	GREEN/WHITE	Green Ball
14	ORANGE/RED	Yellow Ball
15	RED/WHITE	Red Ball
16	WHITE/RED	Neutral
17	WHITE/BLACK	Neutral
18	WHITE	Neutral

ANY REMAINING CONDUCTORS ARE SPARES

MCDOT WIRING GUIDE FOR MAST ARM INTERSECTIONS	
Conductor Color	Indication Type
RED	Red Ball
ORANGE	Yellow Ball
GREEN	Green Ball
BLACK	Green Left Turn
BLUE	Yellow Left Turn
WHITE	Neutral

ANY REMAINING CONDUCTORS ARE SPARES

MCDOT WIRING GUIDE FOR PEDESTRIAN INDICATORS and PUSH BUTTONS	
Conductor Color	Indication Type
RED	Don't Walk
GREEN	Walk
WHITE	PED Enclosure Neutral
BLACK	Push Button Power
ORANGE	Push Button Neutral

ANY REMAINING CONDUCTORS ARE SPARES

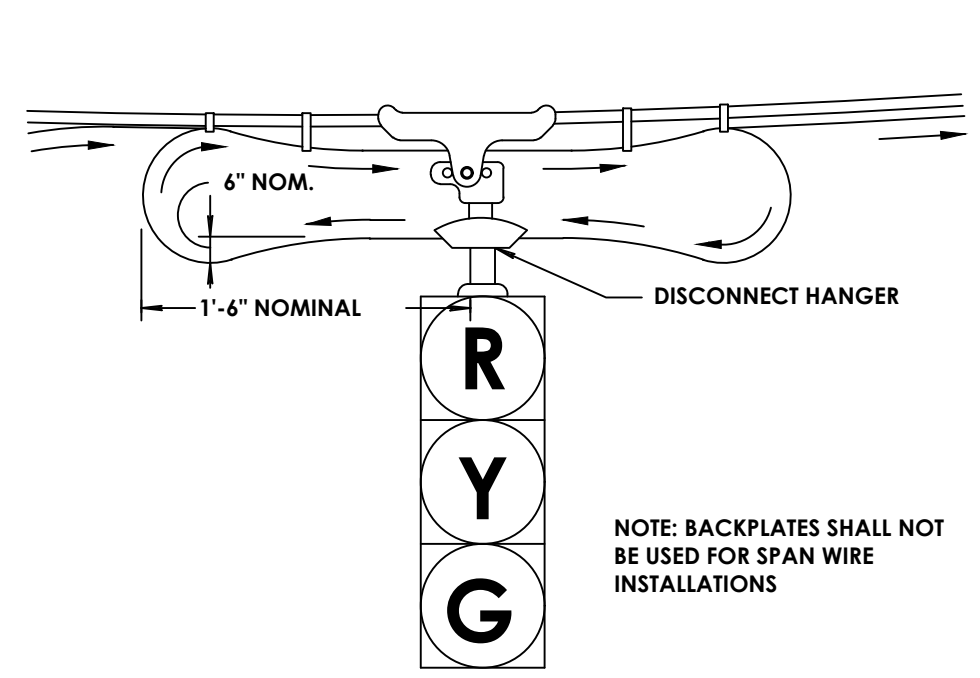
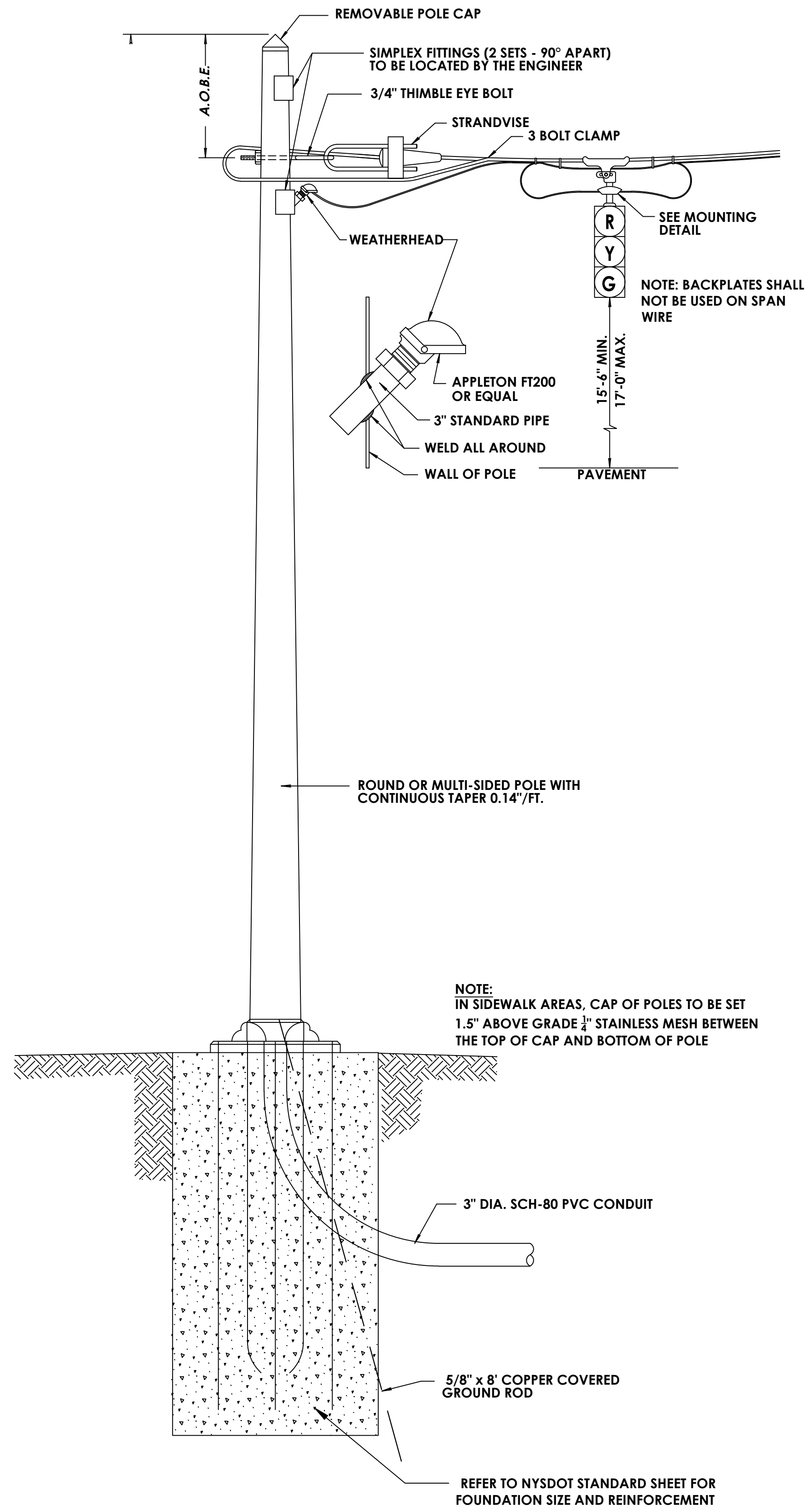
ETHERNET RJ-45 PLUG WIRING GUIDE	
Conductor Color	Pin Number
WHITE/ORANGE	1
ORANGE	2
WHITE/GREEN	3
BLUE	4
WHITE/BLUE	5
GREEN	6
WHITE/BROWN	7
BROWN	8

Version: (B) ON RJ-45 CRIMPER

RJ-45 Plug Pin 1
Clip is pointed away from you.

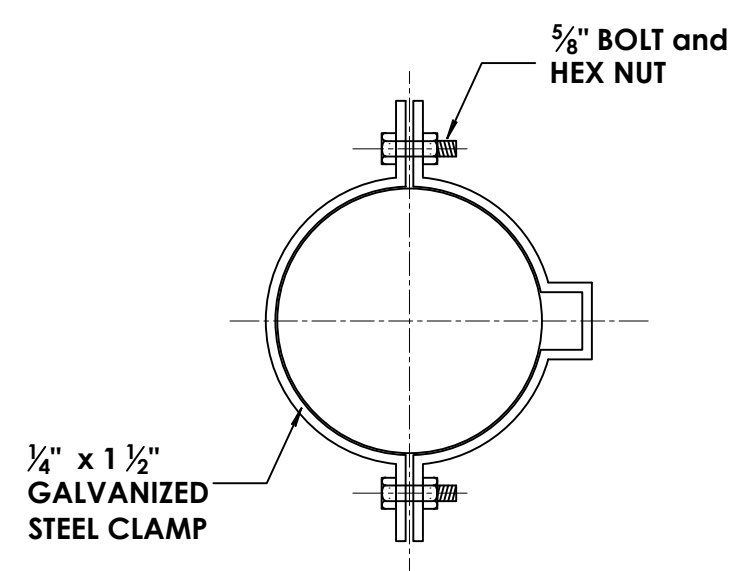
NOTE(s): All Spare wires in the "MCDOT DISCONNECT WIRING GUIDE FOR SPAN WIRE INTERSECTIONS" table should be landed to the "DISCONNECT TERMINAL BLOCK". All Spare wires in the "MCDOT WIRING GUIDE FOR MAST ARM INTERSECTIONS" table should be taped up with electrical tape and identified as "SPARE". All Spare wires in "MCDOT WIRING GUIDE FOR PEDESTRIAN INDICATORS and PUSH BUTTONS" table should be taped up with electrical tape and identified as "SPARE". When making up an RJ-45 ethernet plug work from "Left to Right" with the plug clip facing away from you, this will place "Pin 1" on the left side of the RJ-45 ethernet plug.

CONSULTANT		DEPARTMENT OF TRANSPORTATION	
Address: (585) 867-5309 Rochester, New York XXXX		50 WEST MAIN STREET, SUITE 6100 ROCHESTER, NEW YORK 14614-1231	
PROJECT MANAGER: MANAGER		UNAUTHORIZED ALTERATION OR ADDITION TO THIS DRAWING IS A VIOLATION OF THE NEW YORK STATE EDUCATION LAW ARTICLE 145, SECTION 7209	
DRAWN BY: DRAFTER		COUNTY ROAD #	
NO. DATE BY:		PROJECT NAME	
PROJECT MANAGER: MANAGER		PROJECT LIMITS	
DRAFTER		TOWN	
MANAGER		CAPITAL PROJECT NO. XXXX-XX	
TRAFFIC SIGNALS			
SCALE: NOT TO SCALE			
DATE ISSUED: DATE			
DRAWING NO. 3 OF 4			

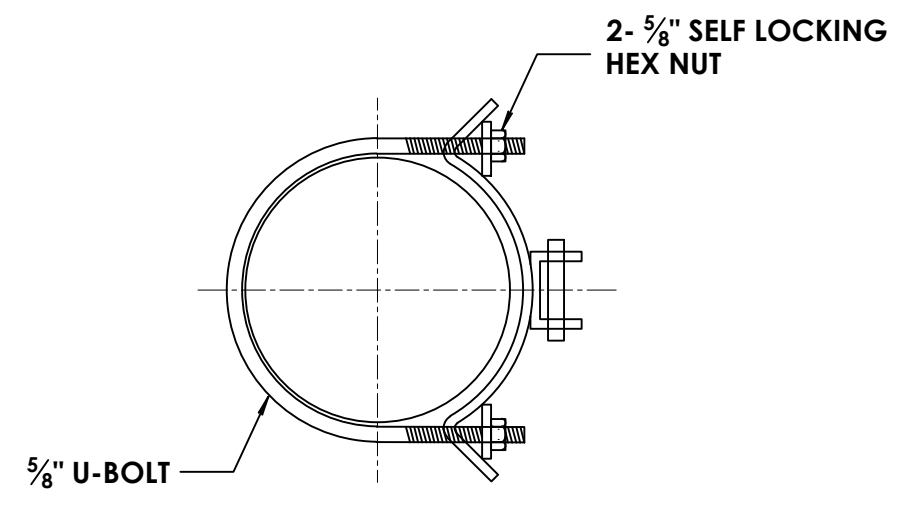


**DISCONNECT HANGER
SPAN WIRE MOUNTING**

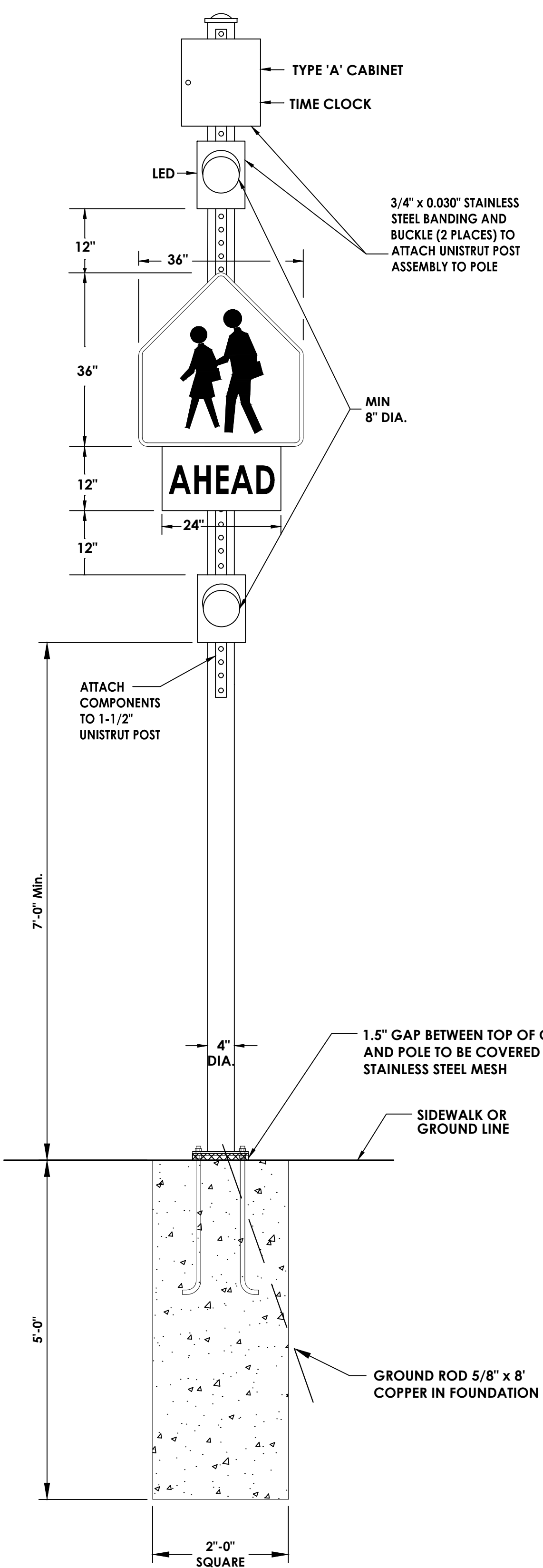
NOTES:
 1. TOP OF SIGNAL HEAD ATTACHMENT POINT TO BE SEALED WITH SILICONE TO PREVENT WEATHER INTRUSION.
 2. CORD CONNECTOR OR STRAIN RELIEF REQUIRED WHERE CABLE ENTERS THE DISCONNECT HANGER.
 3. DRIP LOOP TO BE SECURED TO OVERHEAD CABLE WITH ELECTRICAL TAPE TO PREVENT MOVEMENT DURING WEATHER.



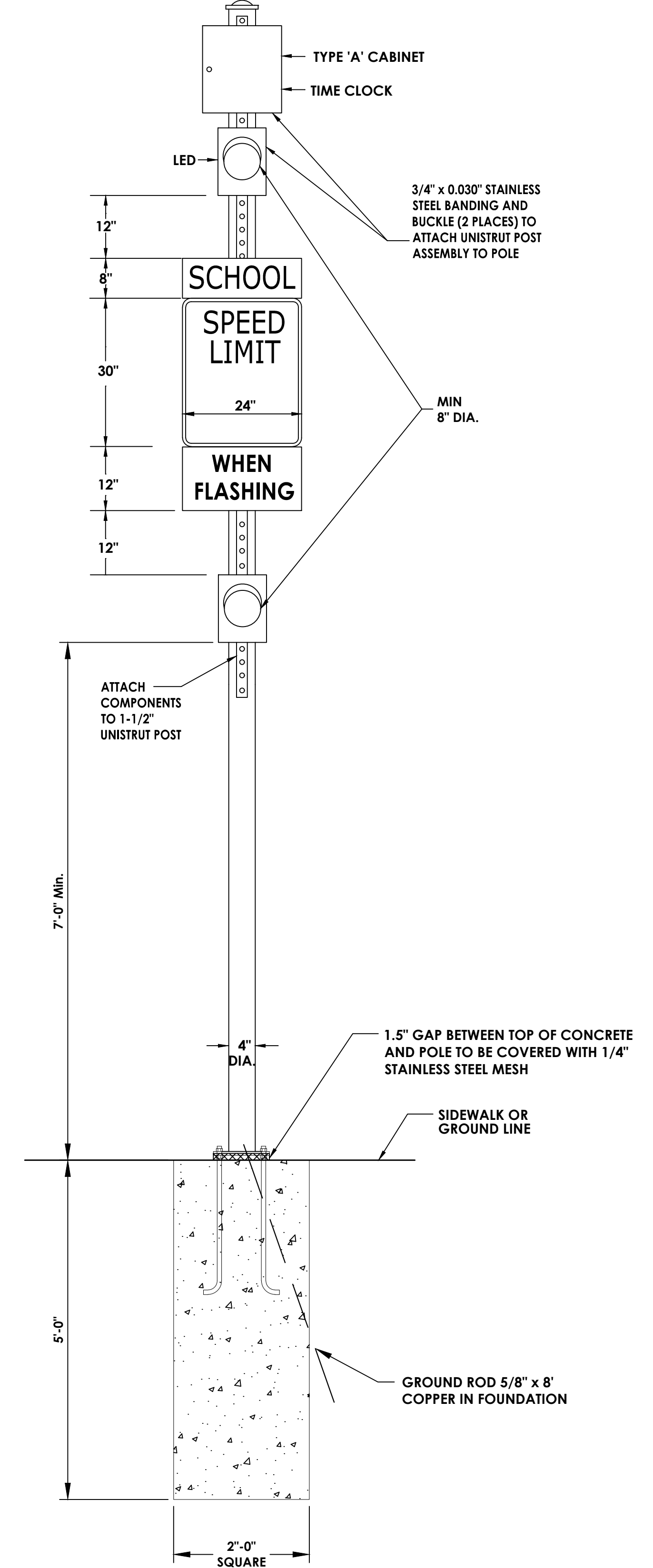
SPLIT CLAMP
N.T.S.



U-BOLT CLAMP
N.T.S.



**ADVANCE SCHOOL ZONE WARNING
FLASHER CONFIGURATION**
MCDOT DETAIL - REV. 7/15/2024



**SCHOOL SPEED LIMIT FLASHER
CONFIGURATION**
MCDOT DETAIL - REV. 7/15/2024

- SIGNAL POLE NOTES**
- A. POLES SHALL BE ADJUSTED BY USE OF THE NUTS ON THE ANCHOR BOLTS SO THAT THEY ARE VERTICAL WHEN ALL SIGNAL HEADS AND SIGNS ARE INSTALLED.
 - B. POLES SHALL BE LOCATED NO CLOSER TO THE ROADWAY OR CURB THAN THE LINE OF FIXED OBJECTS IN THE IMMEDIATE AREA AND IN NO CASE LESS THAN 2' FROM THE ROADWAY OR CURB.
 - C. CONCRETE, BAR REINFORCEMENT, BASE AND GROUNDING TO BE PAID FOR UNDER CONCRETE BASE ITEM.
 - D. BEARING SURFACE OF HOLE SHALL BE UNDISTURBED GROUND OR COMPACTED SOIL. IF A FORM IS REQUIRED OR ANY SPECIAL TREATMENT REQUIRED IT SHALL BE A.O.B.E.

SIGNAL POLE INSTALLATION (STRAIN POLE)
MCDOT DETAIL - REV. 7/15/2024

CONSULTANT		PROJECT MANAGER:		DRAWN BY:	
Consultant Address: Rochester, New York XXXX		MANAGER		DRAFTER	
DEPARTMENT OF TRANSPORTATION		PROJECT NAME		TRAFFIC SIGNALS	
50 WEST MAIN STREET, SUITE 6100 ROCHESTER, NEW YORK 14614-1231		LIMITS		SCALE: NOT TO SCALE	
UNAUTHORIZED ALTERATION OR ADDITION TO THIS DRAWING IS A VIOLATION OF THE NEW YORK STATE EDUCATION LAW ARTICLE 145, SECTION 7209		TOWN		DATE ISSUED: DATE	
COUNTY ROAD #		CAPITAL PROJECT NO.		DRAWING NO.	
PROJECT LIMITS		XXXX-XX		4 OF 4	
NO. DATE BY:		NO. DATE BY:		NO. DATE BY:	
REVISION		REVISION		REVISION	